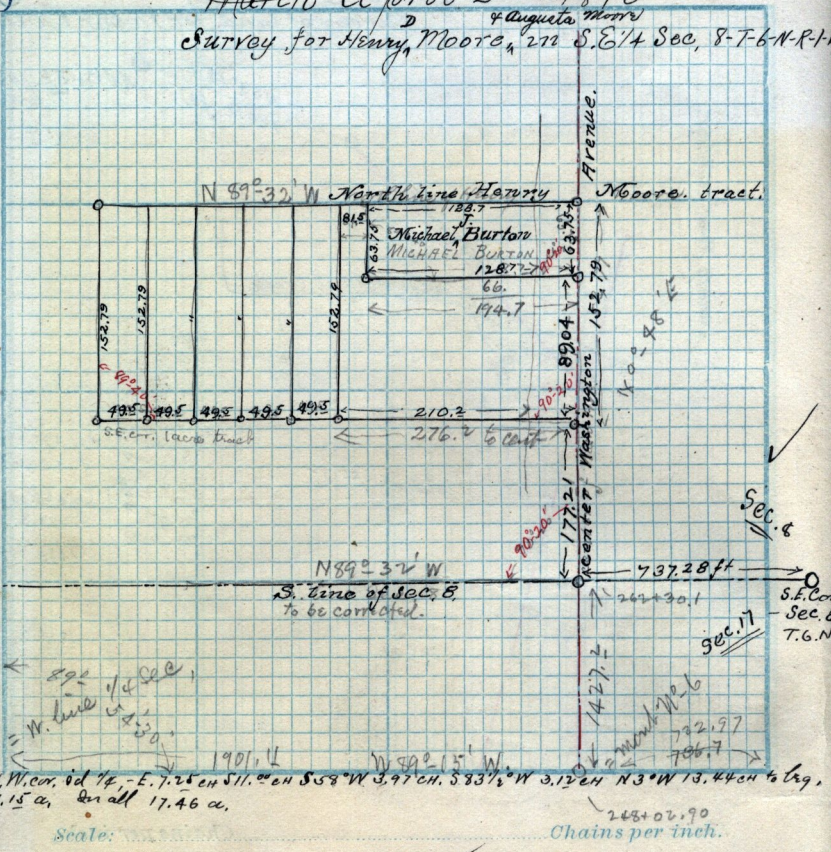


March April 2nd 1890
 Survey for Henry Moore ^{4 Augusta Morris} S.E. 1/4 Sec, 8-7-6-N-R-11



Copy of deed from W^m James Stones to Joanna Reynolds, Apr. 6 1887 - Y-86-
 Pt Lot 4-B-6-Plat A-O-C-8, Beg. 26 ft E. from S.W. cor. E 4. ft. ^{9 inches} N 122.9" West 4'-9" S 122-9" to beg. Also Beg. at S.W. cor. said Lot, E 26. ft 190. ft 9 inches N 26. ft 890 ft 9" to beg. Also Beg 90-ft-9" N. from S.W. cor. said Lot E 26. ft 1132 ft E 4 ft. N. to N. line of said Lot W to N.W. cor. said Lot, 30 ft S along W. line said Lot to beg.

